

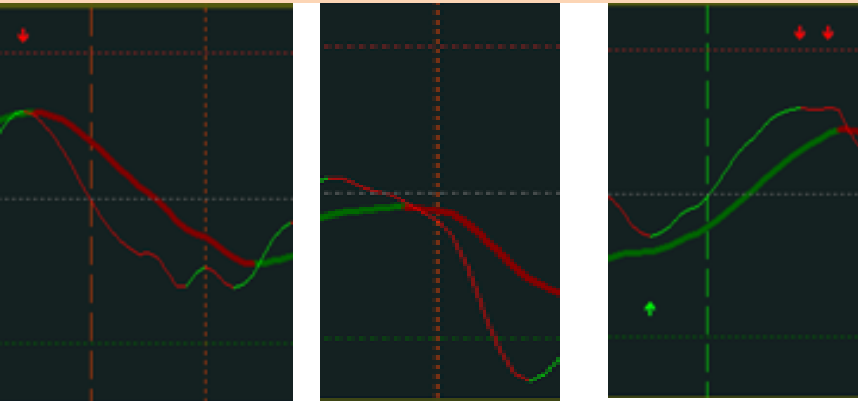
THV TRIX TRADING METHOD

Key points:

RESPECT PIVOT POINTS!!!!

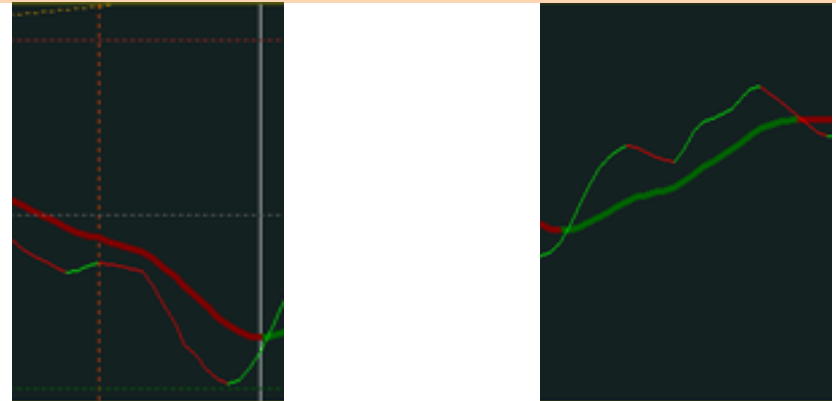
ENTRIES (After divergence arrows)

Fast Trix ZERO crosses
Fast/Slow Trix Crosses



ADD ONS

Fast/Slow Trix failed cross
(Bear/Bull Challenge)

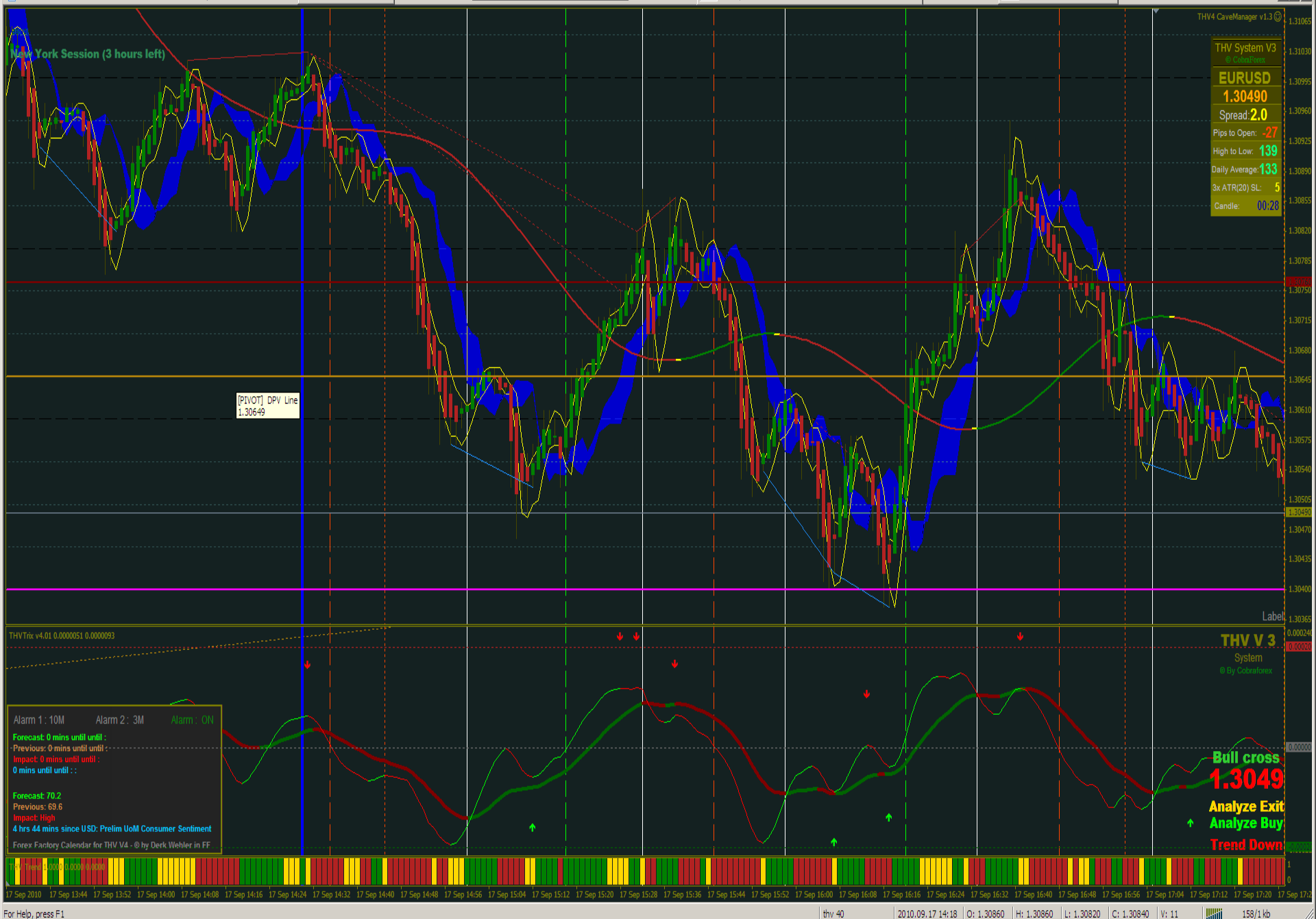


EXITS:

Slow Trix Color Change, or
Trend Lines, or Major Pivot, or Psych Number

Trading Plan

- Only risk 2-3% of account per trade
 - Stop Loss = 300% of ATR(20)
 - T/P = 2 X Stop Loss
 - Trail = .75 X Stop Loss
 - For Example – S/L = 20 pips, T/P = 40 pips, Trail = 15 pips
- From 0730 – 1300 est
- 11 Trades (7 main, 4 Add ons)
 - 149 pips available (13.5 pips average per trade)





Trade 1, with add on 1a

- Fast Trix Cross ZERO (sell 1.3092)
- Fast/Slow TRIX Reject (sell 1.3089)
- Exit (Slow TRIX color Change)(Close 1.3061)
- Profit (30 & 26 pips)

Trade 2

- Fast Trix Cross ZERO (Buy 1.3059)
- Exit (Slow TRIX color Change)(Close 1.3077)
- Profit (21 pips)



A financial chart on a dark background with a grid. It features candlesticks in red and green, and several moving average lines in yellow, blue, and green. A vertical dashed orange line is present. The chart shows a downward trend followed by a slight recovery.

Trade 3

- Fast Trix Cross ZERO (sell 1.3074)
- Exit (Slow TRIX color Change)(Close 1.3062)
- Profit (12 pips)

Trade 4

- Fast Trix Cross ZERO (Buy 1.3062)
- Exit (Slow TRIX color Change)(Close 1.3070)
- Profit (8 pips)



Trade 5, with add on 5a,b

- Fast Trix Cross ZERO (sell 1.3078)
- Fast/Slow TRIX Reject (sell 1.3069)
 - Exit (Slow TRIX color Change)(Close 1.3065)
- Fast Trix Cross (sell 1.3053)
 - Exit (Slow TRIX color Change)(Close 1.3033)
- Profit (14, 4, & 20 pips)



Trade 6, with add on 6a

- Fast Trix Cross ZERO (Buy 1.3042)
 - Exit (Slow TRIX color Change)(Close 1.3045)
- Fast/Slow TRIX Cross (Buy 1.3048)
 - Exit (Slow TRIX color Change)(Close 1.3057)
- Profit (3 & 9 pips)



Trade 7

- Fast Trix Cross ZERO (sell 1.3047)
- Exit (Slow TRIX color Change)(Close 1.3045)
- Profit (2 pips to BE)

